

Santa Clara Valley Habitat Plan

**Public Draft Plan,
EIR/EIS and IA
Public Meeting**

February 15, 2011



SANTA CLARA VALLEY HCP/NCCP PARTNERSHIP



ICF
INTERNATIONAL

Presentation Outline

- Habitat Plan Overview
- Conservation Strategy
- Cost and Funding
- Project Examples and Implementation
- EIR/EIS Public Review & Comment
- Next Steps

Santa Clara Valley Habitat Conservation Plan/Natural Community Conservation Plan

What is the Habitat Plan?

- **Mitigation/Conservation Plan for Development**
 - **50-year Permit Term**
 - **Programmatic Endangered Species Permitting**
 - Conserve species and habitat in perpetuity in Santa Clara County in exchange for permit to “take” threatened and endangered species
- **Habitat Conservation Plan (HCP)**
Complies with Federal Endangered Species Act
 - **Natural Community Conservation Plan (NCCP)**
Complies with California NCCP Act



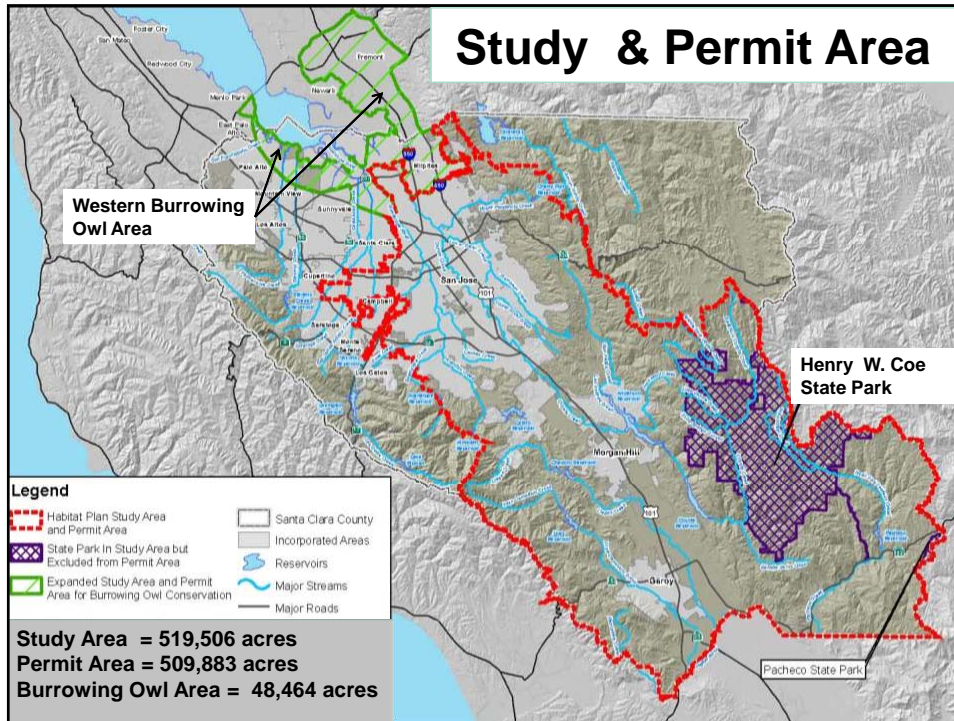
Santa Clara Valley Habitat Conservation Plan/Natural Community Conservation Plan

SCV Habitat Plan Origins

- USFWS Sect. 7 Biological Opinion (2001) recommended HCP
Hwy 101 widening (San Jose to Morgan Hill), Bailey Avenue interchange
Hwy 85/101 interchange, Coyote Valley Research Park
- Local Partners bound by MOU (June 2004)
Santa Clara County
City of San Jose
Santa Clara Valley Water District
Santa Clara Valley Transportation Authority
Gilroy and Morgan Hill join Plan in 2005
- NCCP Planning Agreement signed by all October 2005
- Participating Agencies: CA Dept. Fish & Game (CDFG) and US Fish & Wildlife Service (USFWS)
- Stakeholder Committee & General Public



Santa Clara Valley Habitat Conservation Plan/Natural Community Conservation Plan



What Species are Covered?

10 Plant Species

- Coyote Ceanothus
- Fragrant Fritillary
- Loma Prieta Hoita
- Metcalf Canyon Jewelflower
- Most Beautiful Jewelflower
- Mt. Hamilton Thistle
- San Francisco Collinsia
- Santa Clara Valley Dudleya
- Smooth Lessingia
- Tiburon Indian Paintbrush

11 Wildlife Species

- Bay Checkerspot Butterfly
- CA Tiger Salamander
- CA Red-legged Frog
- Foothill Yellow-legged Frog
- Western Pond Turtle
- Golden Eagle
- Least Bell's Vireo
- Tri-colored Blackbird
- Western Burrowing Owl
- San Joaquin Kit Fox
- Townsend's Big-eared Bat

What Projects will be Covered?

Covered Activities

Activities and projects receiving authorization to “take” species over 50-year term.

Major Categories

- Urban Development
- Rural Development
- New Public Infrastructure
- Public O&M, Capital Projects and Facilities
- SCVWD Activities
- Reserve System Improvements



Santa Clara Valley Habitat Conservation Plan/Natural Community Conservation Plan

Plan Coverage

Covered by the Plan:

- Private projects needing development permits (building, grading)
- Public sector building and other construction projects
- Public sector operations and maintenance work
- 50 yr impact of 25,864 acres

Not covered or Exempt from the Plan:

- Private projects not requiring building, grading or development permits
- Projects on <one-half acre parcels
- Structural additions of <2,000 sq ft of impervious coverage

Habitat Plan does not approve any new development

Santa Clara Valley Habitat Conservation Plan/Natural Community Conservation Plan

Agricultural & Ranching

No Habitat Plan approval needed if:

- ◆ Routine agricultural or ranching activities
- ◆ Construction does not require building, grading or development permit
- ◆ New or expanded vineyards not needing a county permit
- ◆ Routine tree and landscaping maintenance
- ◆ Structural additions < 2,000 sq ft of impervious coverage



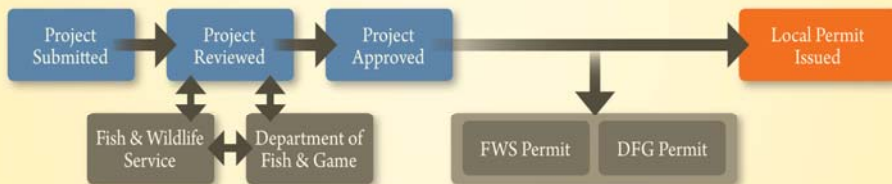
Santa Clara Valley Habitat Conservation Plan/Natural Community Conservation Plan

Endangered Species Permitting

HCP/NCCP PROCESS



CONVENTIONAL PERMITTING PROCESS



Santa Clara Valley Habitat Conservation Plan/Natural Community Conservation Plan

Requirements of Project Approval

Conditions of Approval

- Project review process intended to overlap current process
- Incorporate Best Management Practices (BMPs)
- Plant surveys for rare species (serpentine/riparian areas)
- Animal surveys in distinctive breeding habitat for birds, Kit Fox and Burrowing Owl
- Stream and riparian setbacks based on habitat importance

Santa Clara Valley Habitat Conservation Plan/Natural Community Conservation Plan

Setback Distance on Streams

Slope Class	Fish Bearing Streams		Non-Fish Bearing
	Inside Existing USA*	Outside Existing USA*	
0-30%	100'	150'	35'
> 30%	150'	200'	35'

Fish Bearing Streams = Main Creeks in Study Area (e.g. Uvas, Guadalupe, Coyote, Llagas, and Pacheco)

*USA = Urban Service Area

**If riparian vegetation exists, setback is 35-50 ft beyond edge of riparian area

Santa Clara Valley Habitat Conservation Plan/Natural Community Conservation Plan

Stream & Riparian Setback

Rationale for Riparian Setbacks

- Riparian areas provide important habitat for several covered species (e.g., California Red Legged Frog)
- Provide regional linkages and movement corridors

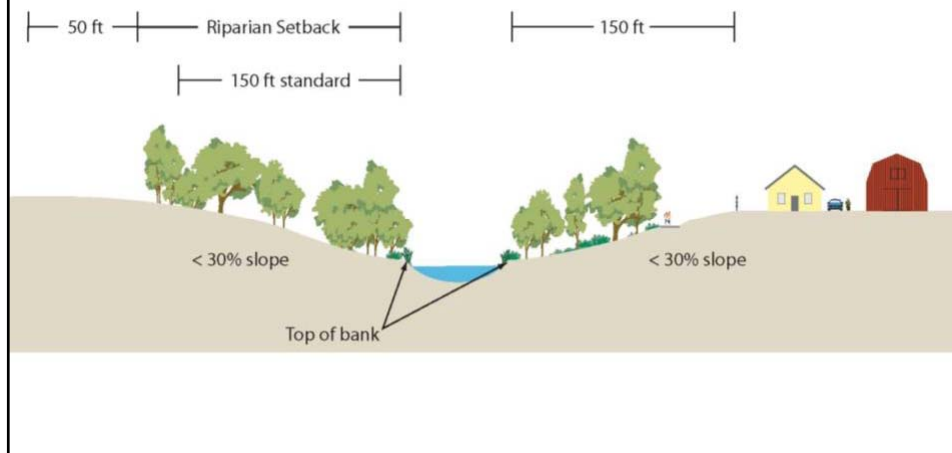
Setbacks based on Four Factors

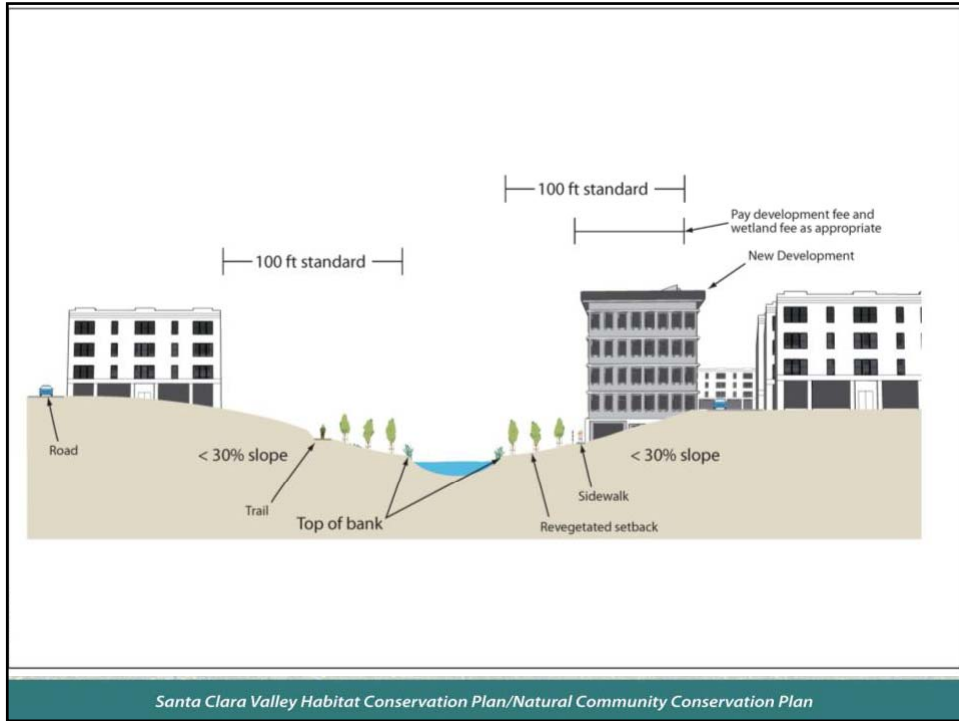
- Fish-Bearing Streams
- Urban vs. Rural
- Slope
- Riparian vegetation



Santa Clara Valley Habitat Conservation Plan/Natural Community Conservation Plan

Stream Setback – Riparian Vegetation





Presentation Outline

- Habitat Plan Overview
- **Conservation Strategy**
- Cost and Funding
- Project Examples and Implementation
- EIR/EIS Public Review & Comment
- Next Steps

Conservation Strategy Highlights

- ◆ **Reserve System** of ~58,000 acres to benefit species and habitat

Acquisition of 45,000 acres *from willing sellers*

Contribution of 13,000 acres from County

Provision of public recreation and access

- ◆ **Landscape Linkages**

Wildlife corridors

Address climate change needs



Santa Clara Valley Habitat Conservation Plan/Natural Community Conservation Plan

Conservation Strategy Highlights

- ◆ **Restoration**

Up to 566 acres of degraded habitats

12.6 miles of degraded streams

- ◆ **Focused Conservation Actions**

Covered species

Natural communities

- ◆ **Long-term Management & Monitoring**

- ◆ **Post-Permit Land Management**



Santa Clara Valley Habitat Conservation Plan/Natural Community Conservation Plan

Draft Plan Conservation Strategy

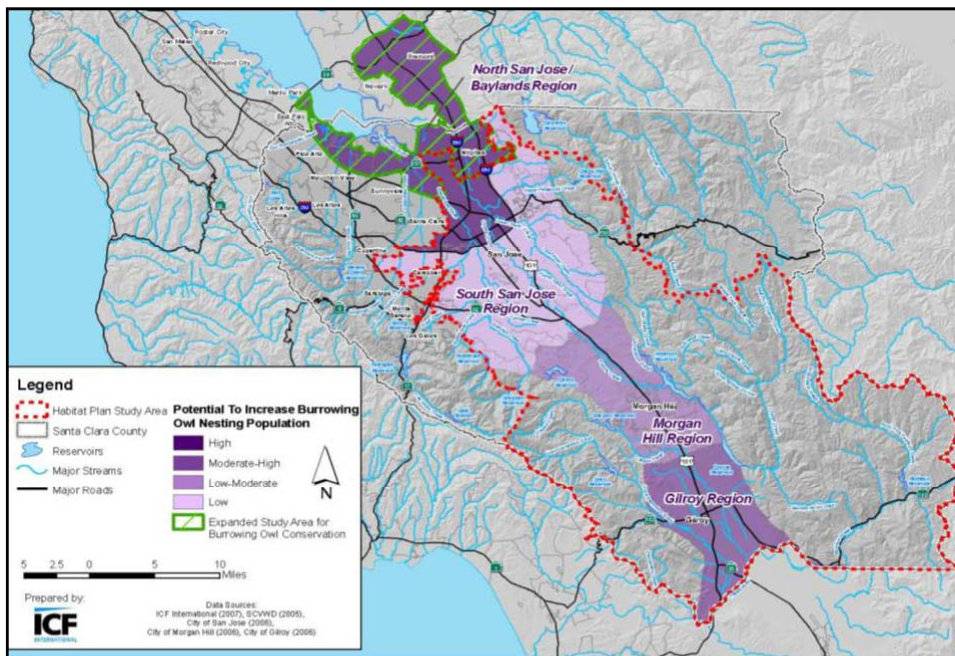
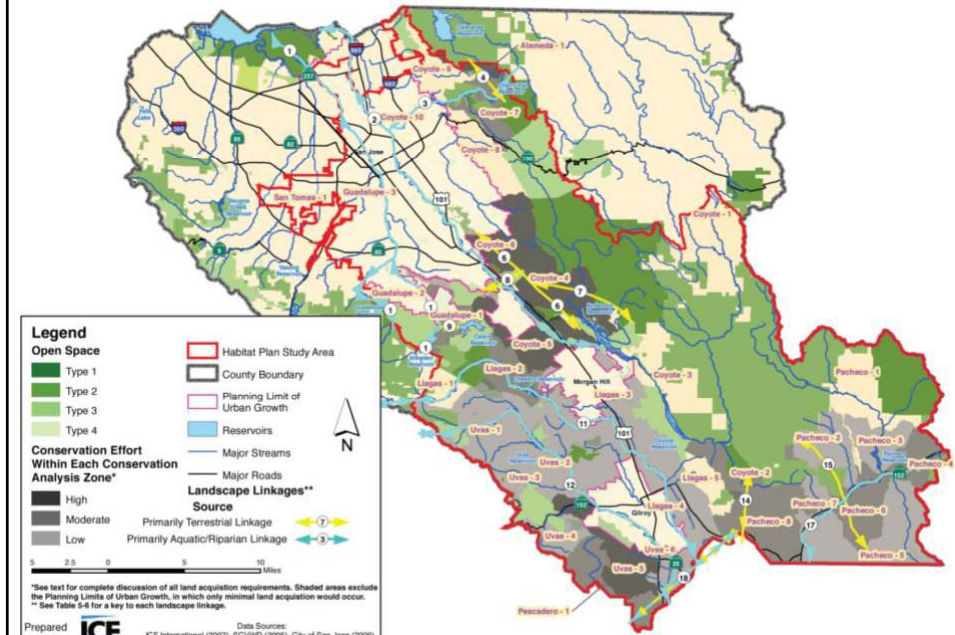


Figure 5-10
Expanded Study Area for Burrowing Owl Conservation

Burrowing Owl Conservation Strategy

- Priority areas:
 - North San Jose/Baylands region,
 - North of the Plan Study Area
- New development directly impacting owl nests & nearby foraging habitat (within 0.5m of nest) pays fee (currently only in San Jose)
- Gilroy/South County long-term goal to re-establish populations

Santa Clara Valley Habitat Conservation Plan/Natural Community Conservation Plan

Presentation Outline

- Habitat Plan Overview
- Conservation Strategy
- **Cost and Funding**
- Project Examples and Implementation
- EIR/EIS Public Review & Comment
- Next Steps

Santa Clara Valley Habitat Conservation Plan/Natural Community Conservation Plan

How much will the Plan Cost?

Implementation Cost

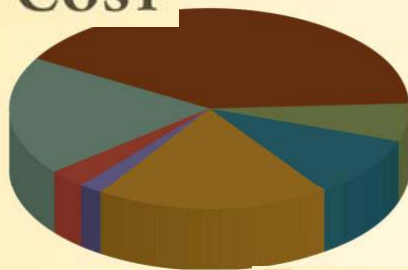
- Total Cost for 50 years -- \$938 million (current dollars)
- Annual Cost -- \$18.75 million (current dollars)

Implementation Funding

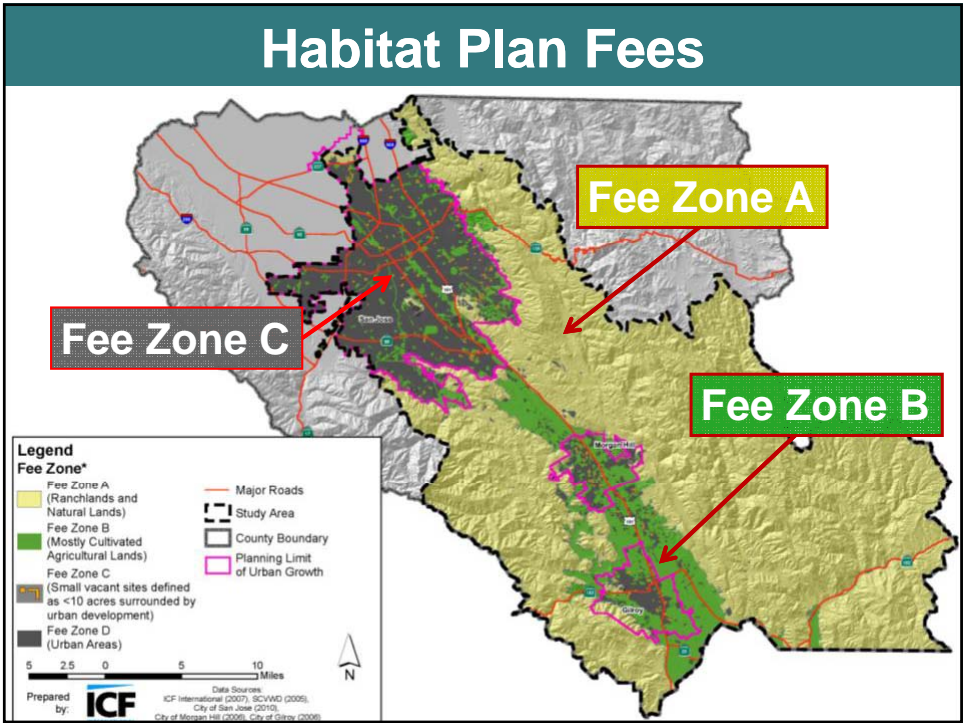
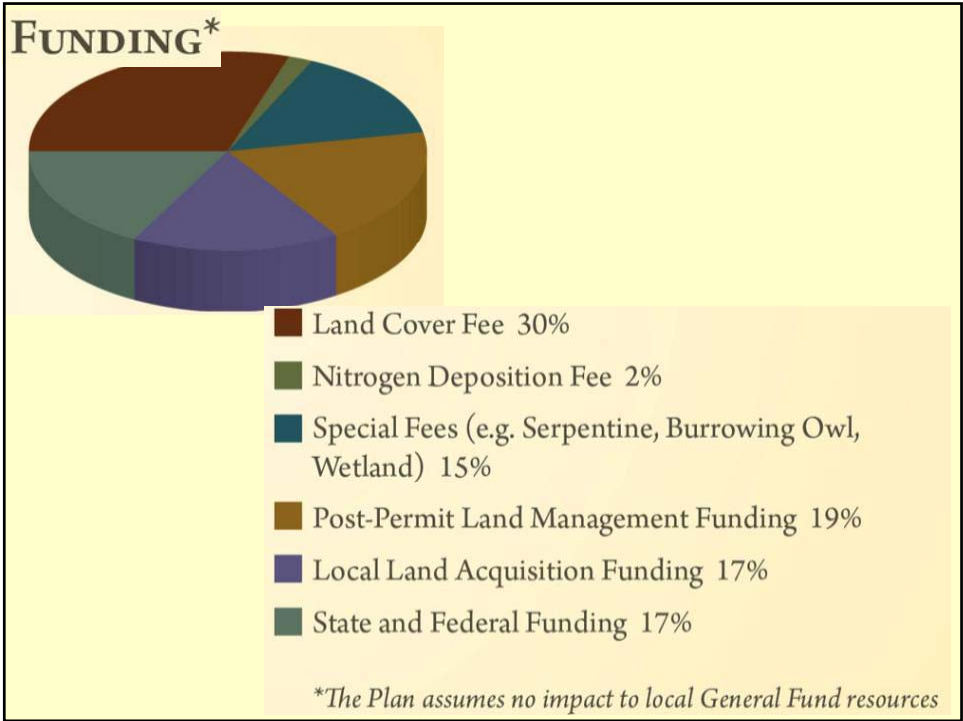
- Public & Private Impact Fees (~58% of costs)
- Land Acquisition by Local Agencies (~17% of costs)
(County Parks and Open Space Authority)
- State and Federal Acquisition Grants (~17% of costs)
- Post-permit Land Management funding (~8% of costs)

Santa Clara Valley Habitat Conservation Plan/Natural Community Conservation Plan

COST



■ Land Acquisition	41%
■ Program Administration	6%
■ Habitat Restoration/Creation	10%
■ Reserve Management (monitoring, maintenance, environmental compliance)	19%
■ Recreation and Public Access	2%
■ Contingency	3%
■ Post-Permit Land Management	19%



Impact Fees

Zone Fees

Zone A – Natural Lands – **\$19,720 per acre ***

Zone B – Agricultural Land – **\$13,790 per acre ***

Zone C – Small Vacant Sites - **\$4,930 per acre ***

Zone D – Urban Sites not in Zones A, B or C – **No fee**

** Includes Post-Permit and Plan Preparation Cost Recovery fees*

Special Fees (in addition to Zone Fee)

Vehicle Emission - \$7.29 per vehicle trip (~\$70/house)

Serpentine Fee – \$64,810 per acre

Western Burrowing Owl - \$25,120 per acre

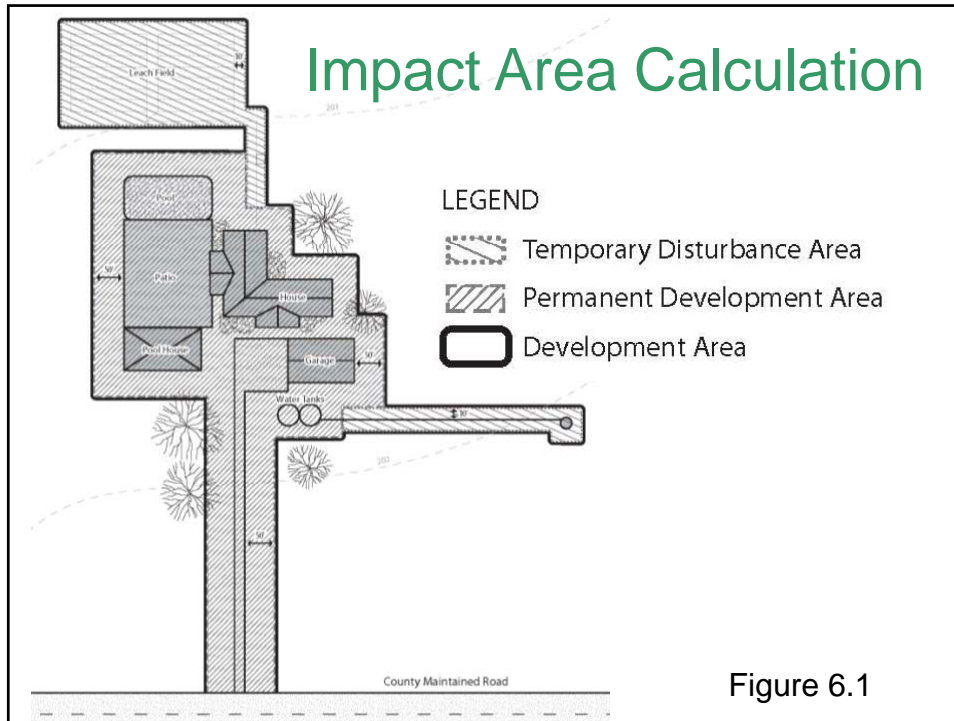
Riparian / Wetland Fees - \$100,000 to \$290,000 per acre

Santa Clara Valley Habitat Conservation Plan/Natural Community Conservation Plan

Presentation Outline

- Habitat Plan Overview
- Conservation Strategy
- Cost and Funding
- **Project Examples & Implementation**
- EIR/EIS Public Review & Comment
- Next Steps

Santa Clara Valley Habitat Conservation Plan/Natural Community Conservation Plan



Rural Private Single Family Residential

Project: 5,600 sq ft house & garage, disturbs 1.79 acres on 20 acre parcel

HCP: 0.79 acres of Coast Live Oak (Fee Zone A) & 1.0 acre of Grain/Row crop (Fee Zone B) OR 1.79 acres of Serpentine in Zone A

HCP Fees: \$31,313 (Zone A, B, B-Temporary, Nitrogen Fees)
+ \$50,300/acre if land is Serpentine

	Current Process – No Species	Current Process – Species	HCP Process
Time required ¹	Minimal	3.5 – 4 years or more	Minimal (verify Collinsia) OR survey for BCB & Serpentine plants
Costs ²	None/Minimal	Over \$30,000 + 18 acres of on-site land mitigation	\$31,313 or, if Serpentine, \$125,336

1 Surveys, permit applications, wildlife agency negotiation, implement mitigation
2 Survey costs, biologist costs, mitigation costs, permit costs, mitigation land costs, CEQA costs, permit fees

Santa Clara Valley Habitat Conservation Plan/Natural Community Conservation Plan

Urban Out fill Project (Gilroy)

Project: Subdivision (12 residential lots) on 16.05 acres

CEQA/ES: MND. Extensive endangered species surveys, mitigation, permitting required. RLF & CTS agency consultations 1998-2006 required 7 acre mitigation area.

HCP: Grain/Row Crop. Fee Zone B (\$13,790/acre)

HCP Conditions/Surveys – No surveys

HCP Fees: \$222,029 (Zone B & Nitrogen Fees)

	Current Process	HCP Process
Time required ¹	Extensive w/ continued monitoring	Minimal
Costs ²	Estimated \$2,750,000	\$222,029

¹ Surveys, permit applications, wildlife agency negotiation, implement mitigation

² Survey costs, biologist costs, mitigation costs, permit costs, mitigation land costs, CEQA costs, permit fees

Santa Clara Valley Habitat Conservation Plan/Natural Community Conservation Plan

Who will implement Plan?

- Local Partners Process Permits
- Proposed Joint Powers Authority (JPA) will implement Plan
 - Managed by Local Partner Elected Officials
 - Responsible for Conservation Strategy Implementation
 - **Governing Board** sets Fees and Annual Budget
 - **Implementing Board** oversees all other Implementation Duties

Santa Clara Valley Habitat Conservation Plan/Natural Community Conservation Plan

Other Legal Contracts

❖ Implementing Agreement (IA)

- Contract between Local Partners & Wildlife Agencies
- Establishes implementation obligations
- Provides Conservation Easement template

❖ Cooperative Agreement

- Contract among Local Partners
- Establishes specific terms and conditions for implementation (e.g., partner contracting for implementation services, fee credit process, etc.)



Santa Clara Valley Habitat Conservation Plan/Natural Community Conservation Plan

SCV HP Costs

- ◆ **Expanded information needed** in public and private project review process (e.g. biological surveys not required under current rules).
- ◆ **New development impact fees.** Some higher, some lower. Distributed more broadly.
- ◆ **New public obligations to track data** on public and private project compliance with Habitat Plan.
- ◆ **Stream and riparian setbacks** for some properties that currently do not have requirements.
- ◆ **New land management obligations** for open space areas within Reserve System.

Santa Clara Valley Habitat Conservation Plan/Natural Community Conservation Plan

Benefits to Public & Private Activities

- ◆ **Clear and certain local permitting process** for public and private sector projects to secure endangered species permits.
- ◆ **Consistent streamlined project review process** and approval conditions.
- ◆ **Time savings** by addressing endangered species issues in current project review process.
- ◆ **Insurance policy** covering future, more restrictive regulations.
- ◆ **Addresses cumulative impacts** on endangered species, reducing project-related risk.

Santa Clara Valley Habitat Conservation Plan/Natural Community Conservation Plan

Environmental & Open Space Benefits

- ◆ **Improve survival of endangered species**, many occurring only in Santa Clara County.
- ◆ **Integrated scientifically-based approach** to acquiring and managing open space to preserve and enhance endangered species.
- ◆ **More conservation** than project-by-project permitting.
- ◆ **Extensive new money for acquisition of non-mitigation open space** by leveraging state, federal and other funding sources.



Environmental & Open Space Benefits

- ◆ **Uniform stream and riparian setback rules.**
- ◆ **Funding for Reserve System land management** during 50 year permit and in perpetuity.
- ◆ **Additional public recreation opportunities.**
- ◆ **Expanded watershed and viewshed protection.**
- ◆ **Climate change addressed** with habitat linkages and movement corridors.



Santa Clara Valley Habitat Conservation Plan/Natural Community Conservation Plan

Presentation Outline

- Habitat Plan Overview
- Conservation Strategy
- Cost and Funding
- Project Examples & Implementation
- **EIR/EIS Public Review & Comment**
- Next Steps

Santa Clara Valley Habitat Conservation Plan/Natural Community Conservation Plan

EIR/EIS Public Review & Comment

Cori Mustin, USFWS
Senior Fisheries & Wildlife Biologist

Matthew Franck, CH2M HILL
Project Manager

Santa Clara Valley Habitat Conservation Plan/Natural Community Conservation Plan

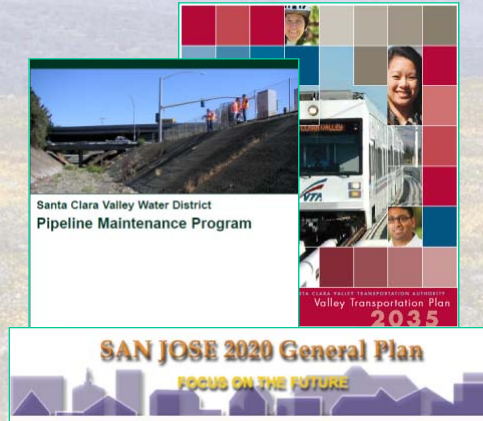
Overview of Draft EIR/EIS

- ◆ Purpose and Objectives
- ◆ Alternatives
 - No Action
 - Proposed Action
 - Alternative A
 - Others Considered
- ◆ Summary of Environmental Impacts
- ◆ Comment Process
- ◆ Next Steps

Santa Clara Valley Habitat Conservation Plan/Natural Community Conservation Plan

No Action Alternative

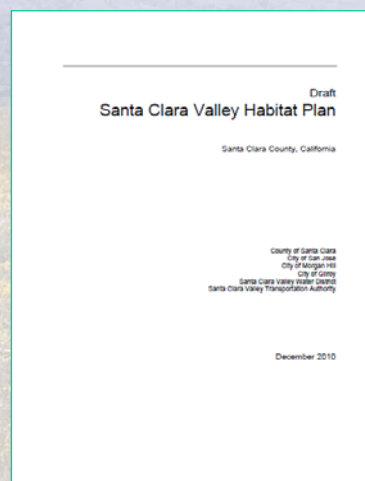
- ◆ Urban development and infrastructure projects consistent with local plans and policies
- ◆ Biological resources considered during review of discretionary actions
 - Listed species focus
 - Case-by-case basis
- ◆ No regional framework for biological resources and natural communities



Santa Clara Valley Habitat Conservation Plan/Natural Community Conservation Plan

Proposed Action

- ◆ Continued urban and related infrastructure development consistent with Habitat Plan's rules and regulations
- ◆ Conservation strategies for 21 species are applied for 50 years
- ◆ Local Partner assurances and regulatory certainty



Santa Clara Valley Habitat Conservation Plan/Natural Community Conservation Plan

Alternative A: Reduced Term

- ◆ 30-year permit term
- ◆ Same level of development as No Action and Proposed Action
 - Consistent with Proposed Action through Year 30
 - Consistent with No Action from Years 30 – 50
- ◆ Smaller reserve system
 - Approximately 46,400 acres

Santa Clara Valley Habitat Conservation Plan/Natural Community Conservation Plan

Other Alternatives

These alternatives were considered but not carried forward for detailed analysis

- Acquisition Focus
- Enhancement Focus
- Reduced Take
- Incidental Take Coverage for Fish Species
- Henry W. Coe State Park
- San Benito County
- Rural Clustering

Santa Clara Valley Habitat Conservation Plan/Natural Community Conservation Plan

Resources Considered

All environmental resources were considered. Detailed analysis was conducted for...

- ◆ Biological Resources
- ◆ Land Use
- ◆ Agriculture
- ◆ Public Services
- ◆ Recreation
- ◆ Hydrology & Water Quality
- ◆ Socioeconomics and Environmental Justice
- ◆ Cultural Resources
- ◆ Transportation
- ◆ Noise
- ◆ Air Quality
- ◆ Mineral Resources
- ◆ Wildfires

Santa Clara Valley Habitat Conservation Plan/Natural Community Conservation Plan

Summary of Biological Resources Impacts

- ◆ Adverse effects to biological resources would be similar to or less than under the No Action Alternative
- ◆ Mitigation benefits would be superior to No Action
- ◆ Benefits to all 21 covered species
- ◆ Benefits to additional species not covered
- ◆ Benefits associated with:
 - Limits on Incidental Take (e.g., Bay checkerspot butterfly)
 - Conditions on Covered Activities
 - Reserve System (58,000 acres)
 - Enhancement, Restoration, and Creation
 - Coordinated Management and Monitoring
 - ...and various other aspects of the comprehensive strategy

Santa Clara Valley Habitat Conservation Plan/Natural Community Conservation Plan

Summary of Other Impacts

Potentially significant impacts to other resources, associated with the Reserve System, which can be mitigated to less than significant

- Agricultural Lands
 - Ensure protection of prime farmland
- Hazardous Materials
 - Ensure that sites are investigated prior to acquisition
- Cultural Resources
 - Investigate impacts prior to Reserve System activities
- Traffic and Noise
 - Protect local residents during intensive restoration work

Santa Clara Valley Habitat Conservation Plan/Natural Community Conservation Plan

Public Comment Open

- ◆ 120-day review and comment period
 - Ends on April 18, 2011**
- ◆ Provide additional data you think is relevant to the decision at hand
 - HCP and environmental impact assessment
 - Help the agencies to make informed decisions
- ◆ Verbal comments here tonight
 - Please clearly state name and city of residence
- ◆ Written comments via form (send or email)

Santa Clara Valley Habitat Conservation Plan/Natural Community Conservation Plan

Presentation Outline

- Habitat Plan Overview
- Conservation Strategy
- Cost and Funding
- Project Examples & Implementation
- EIR/EIS Public Review & Comment
- **Next Steps & Plan Questions**

Santa Clara Valley Habitat Conservation Plan/Natural Community Conservation Plan

What are the Next Steps?

Early 2011 Local Partners public review until **April 18, 2011**

Mid 2011 Prepare Final Plan, EIR/EIS & IA, Establish Implementing Entity (JPA)

Fall 2011 Adopt Plan, EIR/EIS & Implementing Agreement

Late 2011 Wildlife Agencies issue Endangered Species Permits

Early 2012 Local Partners adopt local ordinances

Summer 2012 -- Start Plan Implementation

Santa Clara Valley Habitat Conservation Plan/Natural Community Conservation Plan

Contacts & Plan Questions

For Plan Documents visit www.scv-habitatplan.org

Ken Schreiber

Santa Clara Valley HCP/NCCP Program
County Government Center
East Wing, 11th Floor
70 West Hedding, San Jose
(408) 299-5789
ken.schreiber@ceo.sccgov.org

Cori Mustin

U.S. Fish and Wildlife Service
Sacramento Field Office
2800 Cottage Way, Room W-2605
Sacramento, CA 95825
(916) 414-6600
R8SCVHPcomments@fws.gov

Santa Clara Valley Habitat Conservation Plan/Natural Community Conservation Plan

ADDITIONAL SLIDES

Santa Clara Valley Habitat Conservation Plan/Natural Community Conservation Plan

2001 USFWS Biological Opinion

“To address future impacts of urban and suburban development resulting from the projects, the City [San Jose], County and SCVWD will develop an HCP/NCCP in order to assist the Service and CDFG with the conservation of federally and State listed species in the City and portions of the County. “

(Page 11)

Santa Clara Valley Habitat Conservation Plan/Natural Community Conservation Plan

What the Habitat Plan Will Do?

- **Provide comprehensive open space, conservation and restoration.** Protection and enhancement of highest value habitat areas.
- **Provide permits.** USFWS & CDFG issue permits for “take” of listed species to Local Partners.
- **Streamline projects & Improve local control.** Local Partners extend this take authorization to applicants who meet Plan requirements.
- **Pre-defined mitigation.** Provide large-scale habitat/species conservation in areas of high biological value—avoid project-by-project approach.
- **Provide new money.** Attract new sources of state and federal funding for conservation in County.
- **Provide new resources.** Helps implement General Plans, climate change policies, local flood control/water supply projects, and protects watersheds.
- **Maximize park and open space expansion.** Creates more open space and critical habitat for species within the County.

Santa Clara Valley Habitat Conservation Plan/Natural Community Conservation Plan

Urban Infill Project (Morgan Hill)

Project: Construct 76k sq ft commercial building on 7.72 acres

CEQA/ES: MND. No endangered species surveys required. MH Citywide BOH Mitigation Plan = \$10,360 in fees and preconstruction surveys

HCP: Ag Land Cover. Fee Zone B (\$13,790/acre).

HCP Conditions/Surveys: None

HCP Fees: \$123,983 (Zone B and Nitrogen Fees)

	Current Process	HCP Process
Time required ¹	Minimal	Minimal
Costs ²	\$10,360	\$123,983

¹ Surveys, permit applications, wildlife agency negotiation, implement mitigation

² Survey costs, biologist costs, mitigation costs, permit costs, mitigation land costs, CEQA costs, permit fees

Santa Clara Valley Habitat Conservation Plan/Natural Community Conservation Plan

Gilroy School Access Path

Project: 12 ft wide paved 3,800 ft long path in Uvas Creek Preserve

CEQA/ES: Project specific permit not possible prior to expiration of the project's \$520k construction grant

HCP: Disturbed Grassland Fee Zone B (\$13,790/acre)

HCP Conditions/Surveys – None

HCP Fees: \$19,248 (Zone B & Nitrogen Fees) plus temporary fee

	Current Process	HCP Process
Time required ¹	Project infeasible due to permit processing time	Minimal
Costs ²	\$520k grant + survey costs	\$20,451-\$21,654

¹ Surveys, permit applications, wildlife agency negotiation, implement mitigation

² Survey costs, biologist costs, mitigation costs, permit costs, mitigation land costs, CEQA costs, permit fees

Santa Clara Valley Habitat Conservation Plan/Natural Community Conservation Plan